



# CITY OF GOD

BUILDING A FIRM FOUNDATION



**HOLY FAMILY  
EPISCOPAL CHURCH**

[WWW.HOLYFAMILYFISHERS.ORG](http://WWW.HOLYFAMILYFISHERS.ORG)

Rev. Michael Galvin introduces  
"City of God," a campaign to meet building  
needs for our growing ministries.



## Dear Friends,

**Holy Family Episcopal Church** has a short but exceedingly rich history. In our 25th anniversary year, we have the opportunity to reflect on the amazing work that God has done and continues to do in and through Holy Family. Certainly, our church has faced challenges, but God has always journeyed with us and guided us to new opportunities for spiritual growth and renewal.

We are blessed with excellent worship, amazing children and youth ministry programs, and compassionate outreach to our community and beyond. We make full use of what we have been given, but our building is stretched to its maximum on Sunday mornings and throughout the week. These "challenges" are a direct result of the lives and vibrant ministries that fill this place.

We have now reached a milestone in our life as a parish. "City of God," our campaign to add classroom space, a parish hall, a commercial kitchen, and an expanded gathering area, will enable us to support our growing ministry in the Fishers area. As the vast majority of our parishioners indicated in our survey, our missional objectives will be hindered if we do not build.

In the Galvin household, we have



adopted II Samuel 24:24 as our personal campaign motto, "I will not offer to God that which costs me nothing." Following this principle, Rachelle and I have committed over the next three years to give an amount equal to our tithe for the operating budget of the church. Essentially doubling our current tithe for each of the next three years is a scary proposition as we prepare to send children off to college, but we have prayerfully determined this to be an appropriate sacrifice in our situation. Not everyone will be able to do the same, while others will be capable of giving much more. We are not seeking equal gifts, but equal sacrifice. Seek God's direction and decide what you can do without for awhile to make a sacrificial gift. Rachelle and I are proud to be part of this worthy project; I hope you are, too.

City of God is the mountain we stand before. We cannot conquer it with our own strength. If we stand together and give sacrificially, this project will become a reality. I am convinced that God has led us to this place . . . and I am convinced that, as always, God will be sufficient. Let us conquer this mountain that others may look upon it and give Glory to God in the Highest!

Blessings,

**Fr. Mike**

# Generous giving

Our City of God campaign has a total project budget of approximately \$1 million. Should we not raise enough funds through sacrificial giving, we will investigate financing the remaining balance or possibly scale back the project on

an extended timeline. The decision of “How much should I commit to the City of God capital campaign?” is a personal one. No one can make that decision for you. As you approach the decision, we encourage you to:

- **Reach out to God** | Prayerfully seek God’s guidance as you make your commitment decision.
- **Evaluate your resources** | Truly consider everything God has put under your stewardship.
- **Nail down the specifics** | Determine specifically how your resources can be used to compile a generous contribution.
- **Educate yourself** | Consider “out of the box” ways that you can increase your contribution.
- **Walk by faith** | Determine your best commitment and trust God to help you successfully fulfill it.

## Get creative!

Some families may seek more creative ways of securing funds to include in their capital campaign commitment. For instance:

- **Seek out company matching programs.**
- **Contribute stocks, bonds, or other securities.**
- **Sell collectibles that may no longer be of importance and donate the profit.**
- **Postpone a large family vacation or remodeling project and contribute what you would have spent.**
- **Give up certain indulgences like “designer coffee” or sweets and contribute the savings.**



“We are all aware of the huge sacrifice God made for us, and I plan to incorporate that awareness in my giving ... there is no greater love.”

— Nancy Thomas



“I saved that 10 dollars at the end of each month for church, and it was a sacrifice from my social life I was happy to make.”

— Jacob Forman

# City of God: an overview

The following questions are among the more common issues raised since we announced plans for a capital campaign. If you have additional questions, please direct them to Father Mike Galvin at [father\\_mike@hfec.org](mailto:father_mike@hfec.org), or Charles Forman at [forman@isgroup.org](mailto:forman@isgroup.org).

## Why are we undertaking this capital campaign at this time?

Many of us believe that God is calling us into greater service in this community. In order to respond to those needs, we need the appropriate facilities.

## What is the fundraising goal?

Based upon interviews of our parishioners, Atlanta-based consulting firm Generis recommended a campaign goal of \$1 million. We have planned renovations in line with this feasibility study. Should we not raise enough funds to complete the project, we will review the design and scale down areas, pushing them into Phase Two of our overall Master Plan. Also, we could investigate bank financing to cover the gap if terms are affordable and within the church operating budget.

## Do we have the expertise to do a capital campaign?

Generis is assisting us with this process. The firm has helped thousands of churches and other non-profits raise resources to further their missions. Mr. Tom Melzoni, a former pastor who lives in Dayton, OH, is our consultant. Tom is working with two other churches in the area to raise funds for their projects.

## How will the campaign work?

During the campaign each of us will be asked to prayerfully consider a 3-year sacrificial commitment over and above our annual offertory support. No one will be pressured or told how much to give. Each of us is asked to give according to our blessings. If we all work together, we can do this!

## Not Equal Gifts, But Equal Sacrifice



**"As our family prepares to relocate for work, we're so sad to be moving away from the embrace of such a caring, supportive parish, and despite our departure, we plan to contribute to the City of God campaign."**

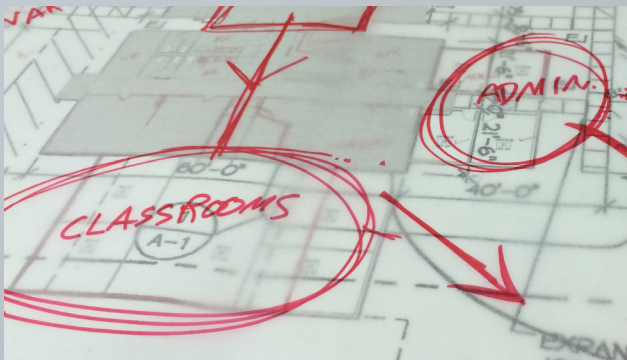
**— Stephen & Lindsey Jendraszak**

## Is my pledge binding?

A pledge is an expression of personal commitment, not a contract. We hope that you can meet your financial commitment, but we recognize that, on occasion, circumstances change over the course of the year — both positively and negatively.

## Will there be an increase in the number of classrooms available for Christian Education?

The youth (teens) area will be gaining a new and larger classroom. The children will be gaining a “Commons” for community gatherings. The elementary age students will gain two classrooms and will have three distinct areas that will allow multiple activities to happen at one time. The nursery will move to a more secure area and gain additional space. Gathering spaces with movable partitions between classrooms will allow larger events to take place. Finally, we will gain at least two designated spaces for adults to gather for adult forum, Bible study, etc.



## How will all of this financial investment enhance our spiritual growth?

Holy Family has a powerful message of God’s inclusive and transforming love that is resonating with more and more people. Our membership is growing because of this, especially in the numbers of young adults, youth and children. This is the future of our church. It is our responsibility to physically accommodate and cultivate the spiritual growth of all who want to experience HFEC’s message of God’s love.

## What are the greatest benefits of the new facilities?

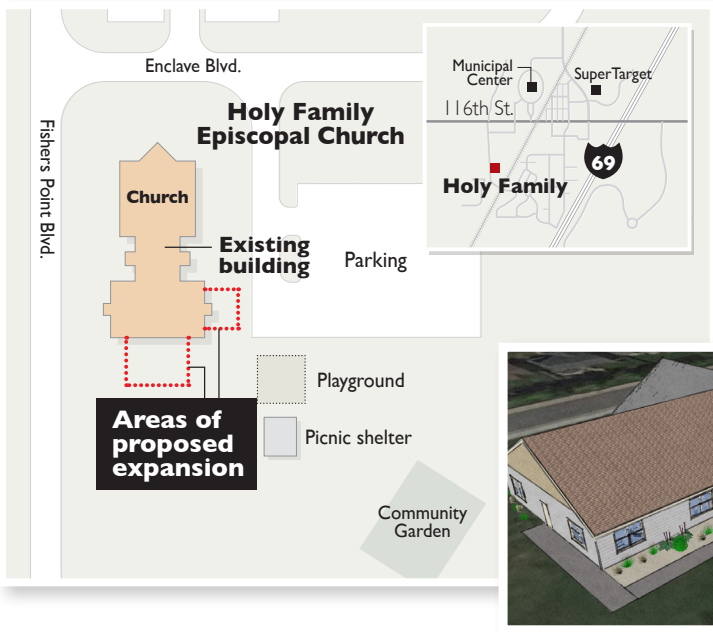
### ***Enhanced Opportunities for Learning and***

***Ministry:*** A new commercial kitchen, upgraded restrooms, a large narthex with various seating areas for gathering, a social hall large enough to gather all parishioners, additional children and youth classroom space with moveable partitions to accommodate various types of gathering, administrative offices consolidated to achieve more efficient operations, and two to three dedicated adult classrooms for meeting and formation opportunities.

(FAQs continued on Page 8)

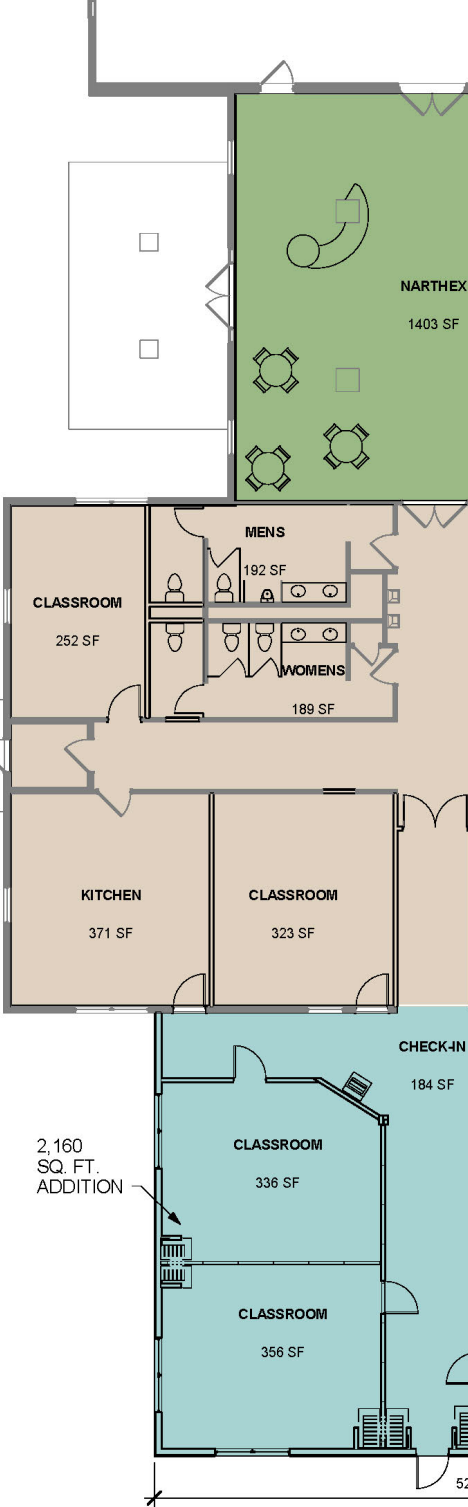
# City of God: an overview

The renovation and expansion of Holy Family’s building is aimed at enhancing opportunities for learning and ministry. Flexible space will allow us to tailor the areas of the building to meet these goals. Here’s a quick look at how the space will work:



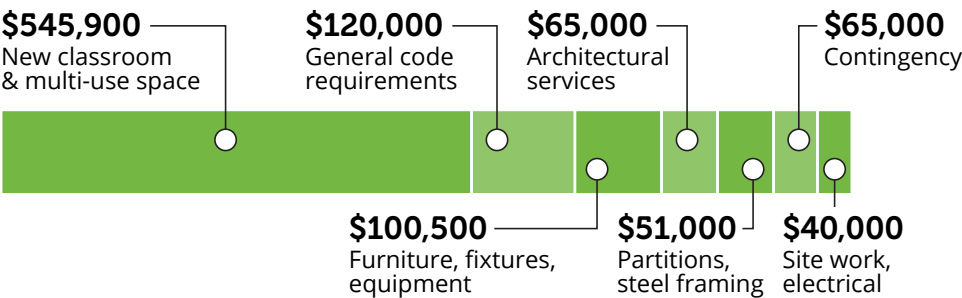
## Footprint

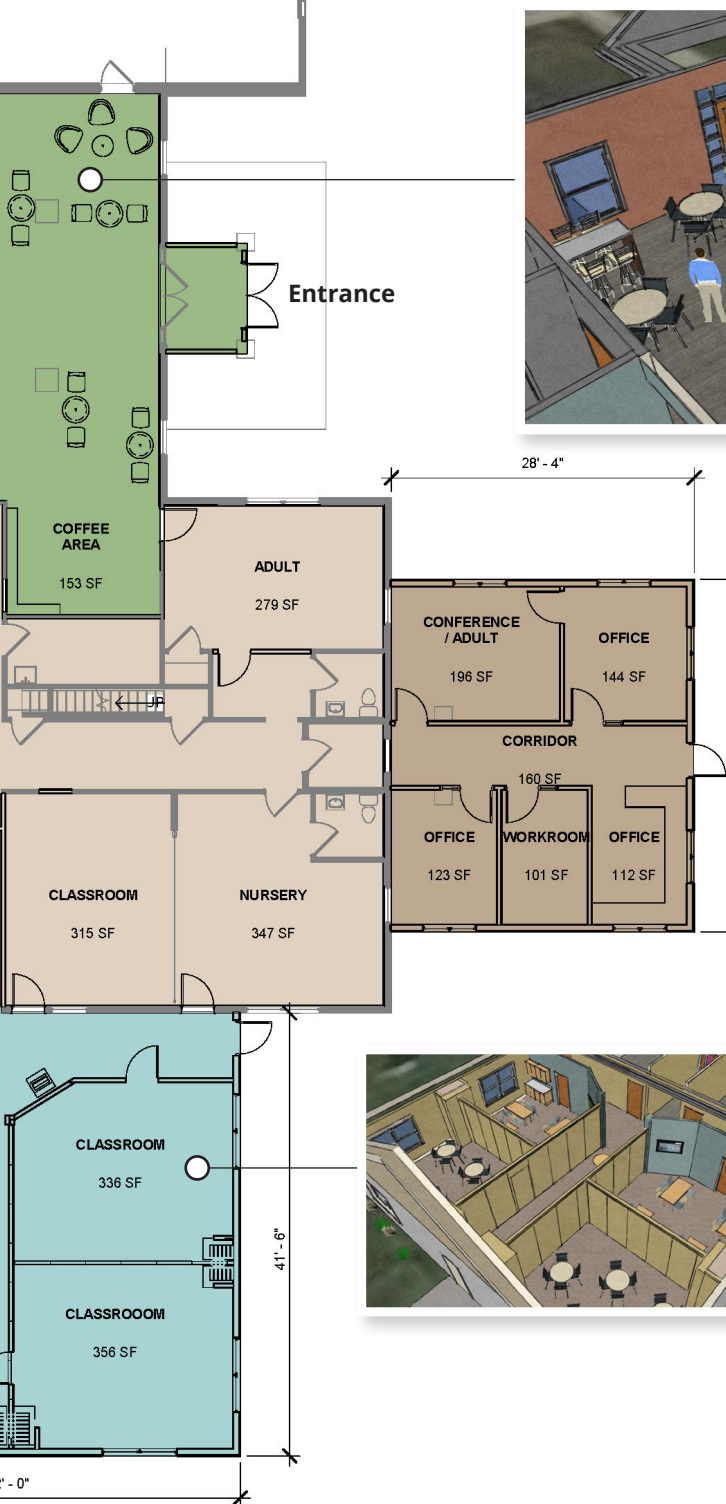
The largest outward changes in the church’s appearance will be in expansions from the east and south sides of the building.



## Cost breakdown

The added space accounts for more than half the total cost. Here’s how the expenses add up:





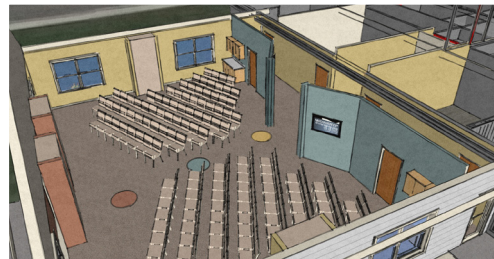
Sanctuary doors

## Narthex

With existing office walls removed, the expanded narthex will accommodate a coffee bar and more room to meet.

## Flexible space

Movable walls in the southward expansion will allow space for four classrooms, or an open space that can accommodate large meetings and events.



(FAQs continued from Page 5)

**Flexibility:** The demands for space at Holy Family far exceed availability. Whether more room is needed for an after-school program, a scout meeting, a conference, a self-help group, or a prayer group, Holy Family will be prepared to accommodate these various needs.

**Peace of Mind:** Safety for our students, parishioners, staff, parents, and visitors is paramount at Holy Family. The creative design of the new buildings provides secure facilities for the many activities that go on here day and night.

## Are we on solid financial footing?

Yes. The staff and vestry of Holy Family have always been good stewards of our resources, understanding that we are entrusted with the responsibility not only to you, our parishioners and families, but also to God. Finances are managed by our Treasurer.

## Holy Family's mission

We bear witness to the Light of Christ by serving as the heart and hands of Jesus, nourishing people and transforming lives.



## My company matches gift contributions. How can I take advantage of that opportunity?

Matching gifts are a great way to maximize the impact of your own gift! The best place to start is with your company's human resources representative. They can provide you with the paperwork you will need to get started. You or your company will then need to get in touch with the church office at Holy Family so we can complete our portion of the paperwork to facilitate the match.

## What is the church's membership?

About 350 individuals from around 100 households call Holy Family their church home. Between two services, our average Sunday attendance generally ranges from about 135 to 160 persons. The sanctuary currently seats 220, and could likely seat 275 with additional chairs and some changes to the chancel area (platform upon which the altar sits).

## What is the project's timeline?

Construction is slated to begin in the late summer to early fall of 2015. Construction should be complete near year end.

## How long will I have to fulfill my pledge?

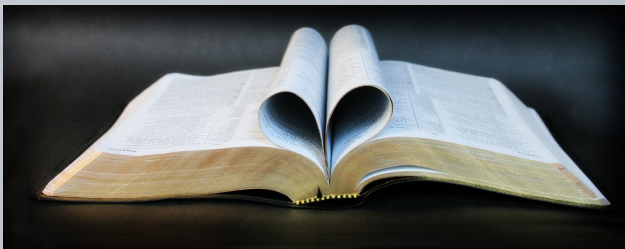
We prefer that pledges be paid over a three-year period, from 2015 to 2018. However, realizing that some might need an additional year, we will accept payments through December 31, 2019.

## What will happen to programs and meetings that are currently being held in space at the church?

We are currently reviewing each program and alternate space is being identified. Staff is working with available space at HFEC as well as other venues, and hopes to accommodate most groups.

## What will happen to Sunday Formation?

Our children and youth formation classes will continue on a regular schedule. Rooms may change, but that information will be communicated well in advance. We will offer at least one adult formation class most Sundays in the sanctuary.



## Will we be able to host large functions like conferences and dinners?

Our new space will feature moveable walls that will allow gatherings of all sizes up to about 200 people. Our new kitchen will be much larger with commercial grade equipment that will support functions with sizeable numbers of people.

## How can I be helpful now?

If you would like to help with one of these groups, please contact Cheryl Burke in the church office at 842-4133. Allow God to speak to your heart through prayer. Read Scripture passages that speak about stewardship and giving, such as *1 Corinthians 16:2, Proverbs 11:25, Proverbs 3:5-9, 2 Corinthians 8:7, Acts 20:35, Luke 6:38, and Psalm 116:12*. Secondly, make your pledge early in the campaign so volunteers will not bother you with follow up calls.

## If I can't give a large amount, does my pledge really matter?

Yes, absolutely! All contributions matter regardless of the amount because as we all participate according to our ability, God multiplies our giving.

Sunday, April 19, 2015  
The Third Sunday In Easter

Gospel Reading For The Day

Luke 24:36b-48

**Sermon:** *"My stuff is not my stuff"*

**Synopsis:** God doesn't just want your money; God wants every part of you dedicated to His service. And you don't really know what joy is, what happiness is, what fulfillment is, until you live your life for God.

**Notes:** \_\_\_\_\_  
\_\_\_\_\_  
\_\_\_\_\_  
\_\_\_\_\_  
\_\_\_\_\_  
\_\_\_\_\_  
\_\_\_\_\_  
\_\_\_\_\_  
\_\_\_\_\_  
\_\_\_\_\_  
\_\_\_\_\_  
\_\_\_\_\_  
\_\_\_\_\_  
\_\_\_\_\_  
\_\_\_\_\_  
\_\_\_\_\_  
\_\_\_\_\_  
\_\_\_\_\_  
\_\_\_\_\_  
\_\_\_\_\_  
\_\_\_\_\_

Sunday, April 26, 2015  
The Fourth Sunday In Easter

Gospel Reading For The Day

John 10:11-18

**Sermon:** *"Your Heart Follows Your Money"*

**Synopsis:** This message is about our hearts, about the deepest, truest part of who we are. The place where we need to connect with God. We were made by God to desire and want things. This is really important. In fact, God made us in his image, and part of that image is to have desires. The difficulty comes when our desires are misdirected. That is where we run into our problems.

**Notes:** \_\_\_\_\_  
\_\_\_\_\_  
\_\_\_\_\_  
\_\_\_\_\_  
\_\_\_\_\_  
\_\_\_\_\_  
\_\_\_\_\_  
\_\_\_\_\_  
\_\_\_\_\_  
\_\_\_\_\_  
\_\_\_\_\_  
\_\_\_\_\_  
\_\_\_\_\_  
\_\_\_\_\_  
\_\_\_\_\_  
\_\_\_\_\_  
\_\_\_\_\_  
\_\_\_\_\_  
\_\_\_\_\_  
\_\_\_\_\_  
\_\_\_\_\_

Sunday, May 3, 2015  
The Fifth Sunday In Easter

Gospel Reading For The Day

John 15:1-8

**Sermon:** *"He Who Dies With The Most Toys Still Dies"*

**Synopsis:** We must do more than just live for today. The point of life is not to accumulate as much as you can for yourself; to have the most toys; to have a secure retirement. That is not the point at all. "Use worldly wealth to gain friends for yourselves, so that when it is gone, you will be welcomed into eternal dwellings."

Notes: \_\_\_\_\_

\_\_\_\_\_

\_\_\_\_\_

\_\_\_\_\_

\_\_\_\_\_

\_\_\_\_\_

\_\_\_\_\_

\_\_\_\_\_

\_\_\_\_\_

\_\_\_\_\_

\_\_\_\_\_

\_\_\_\_\_

\_\_\_\_\_

\_\_\_\_\_

\_\_\_\_\_

Sunday, May 10, 2015  
The Sixth Sunday In Easter

Gospel Reading For The Day

John 15:9-17

**Sermon:** *"Building The City of God"*

**Synopsis:** This sermon is the final message in a four part series. Today we focus on the reality that God does not prosper us to raise our standard of living, God prospers us to raise our standard of giving. God wants you to give what you have, not what you don't have.

Notes: \_\_\_\_\_

\_\_\_\_\_

\_\_\_\_\_

\_\_\_\_\_

\_\_\_\_\_

\_\_\_\_\_

\_\_\_\_\_

\_\_\_\_\_

\_\_\_\_\_

\_\_\_\_\_

\_\_\_\_\_

\_\_\_\_\_

\_\_\_\_\_

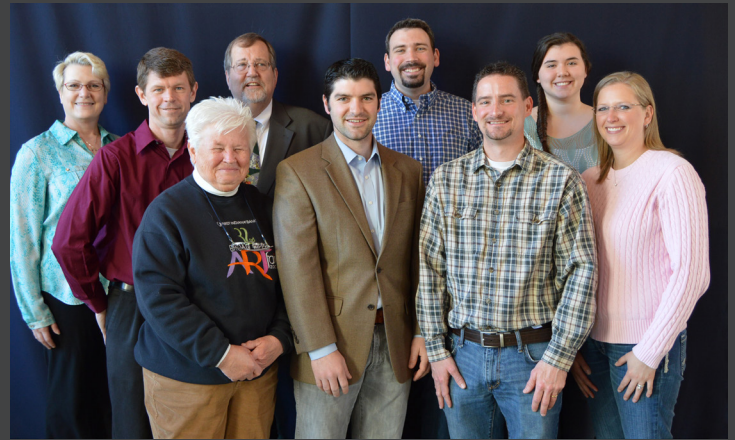
\_\_\_\_\_

\_\_\_\_\_

## Commitment Prayer

*God of steadfast love, we praise you for the gift of your Creation and the beauty of fellowship. Bless our efforts in this Capital Campaign as we build up the City of God and expand our church walls to embrace an ever-widening ministry in your Name. Strengthen our commitment to generously share those talents and treasures that you have graciously provided us. Inspire our family to share ourselves and our many gifts with our brothers and sisters in Christ. Renew us as a welcoming community, a holy village that reflects your Kingdom and invites all to share in the Good News. We ask this in the name of Your Son, Jesus, our Savior and Brother.*

*Amen.*



Members of Holy Family's Vestry.

## CONTACT//

**Office:** 11445 Fishers Pointe Blvd., Fishers, IN 46038

**Phone:** (317) 842-4133

**E-mail:** [admin@hfec.org](mailto:admin@hfec.org)

**Web:** [HolyFamilyFishers.org](http://HolyFamilyFishers.org)



[/HolyFamilyEpiscopal](https://www.facebook.com/HolyFamilyEpiscopal)



[@HolyFamilyFshrs](https://twitter.com/HolyFamilyFshrs)



**HOLY FAMILY  
EPISCOPAL CHURCH**

[WWW.HOLYFAMILYFISHERS.COM](http://WWW.HOLYFAMILYFISHERS.COM)